



## Advanced ceramic disc valve for residential and light commercial use.

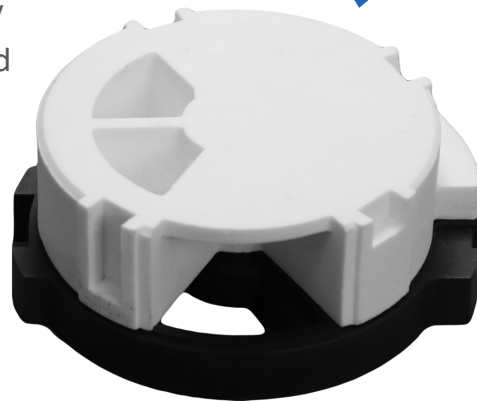
The DWC Ceramic Disc Control Valve is the most dependable and flexible valve on the market today. The patented ceramic disc design, with (7) seven advanced programming options and fully adjustable cycles, provides ultimate performance and reliability. DWC Disc Valves use up-flow regeneration to wash the media for a more efficient and effective cleaning.

Interlock features, signal outputs and twin-demand options are available to supply water 24/7. Advanced work modes are available with (4) four adjustable cycle sequences to achieve the exact configuration needed for any application.

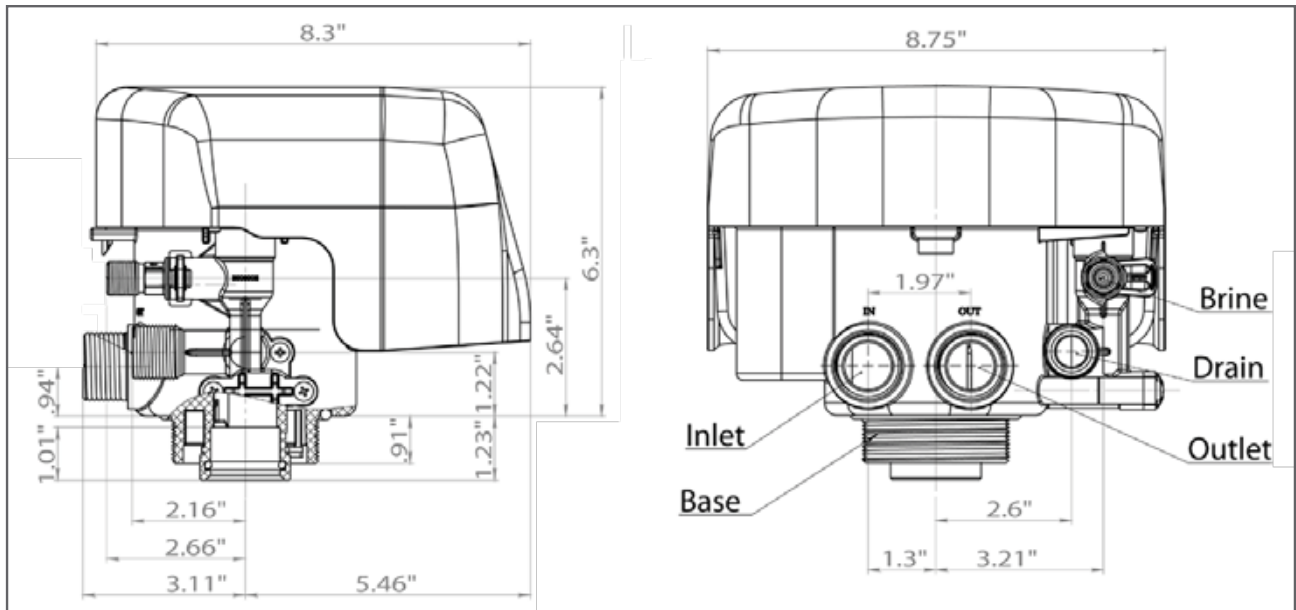
### DWC Disc Valve Features:

- Patented ceramic discs are corrosion and abrasion resistant for longer life and reduced maintenance.
- No wear parts to service or replace which means **no maintenance, disassembly or replacement parts needed!**
- 32mm (1-1/4") internals for high flow.
- Complete flexibility when programming grains capacity / salt dosage. Not constrained to limited, pre-programmed choices.
- Bright, easy to read LCD display.
- 72-hour memory backup for program functioning.
- No external controller required to operate multiple control heads or external devices.
- Valve can be used for either softener or backwashing filter.

**Ceramic discs are  
200x stronger than  
steel. Made to last  
a lifetime!**



This valve is Tested and Certified by NSF International against NSF/ANSI Standard 44 for materials and structural integrity requirements.



## Operational Specifications

Operational Pressure	Operational Water Temperature	Inlet Water Turbidity
20-120 psi	35°F-125°F	<5NTU

## Control Valve Parameters

Inlet / Outlet	Drain	Brine	Base	Riser Tube	Hard Water Bypass
3/4", 1" (DEFAULT), or 1-1/4"	3/4"	3/8"	2.5" - 8NPSM	32mm	Yes

Service @ 15 psi Drop	Peak Service @ 25 psi Drop	Peak Backwash @ 35 psi Drop
21 gpm	25.5 gpm	10.4 gpm

## Advanced ceramic valve system for residential and light commercial use.

DWC Disc Valve Softening Systems are designed with high flow rates to handle most residential or light commercial applications.

They feature innovative, patented ceramic discs that are abrasion and corrosion resistant, **made to last a lifetime**, and significantly reduce maintenance costs. All systems use high-quality, 8% crosslink resin for exceptional longevity.

The brains in each system, the DWC Disc Valve, has 7 advanced programming options with fully adjustable cycles to minimize water usage during regeneration. Up-flow regeneration efficiently washes the media, exchanging more grains per pound of salt. DWC Disc Valves have a signal output for external devices, program functions that remain in long-term memory, and 72-hour memory backup should a power outage occur, giving you the confidence that you are receiving a cost-effective, high-quality water treatment solution.

### DWC Disc Valve Softening Systems Feature:

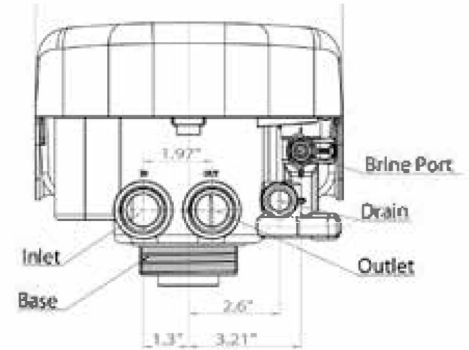
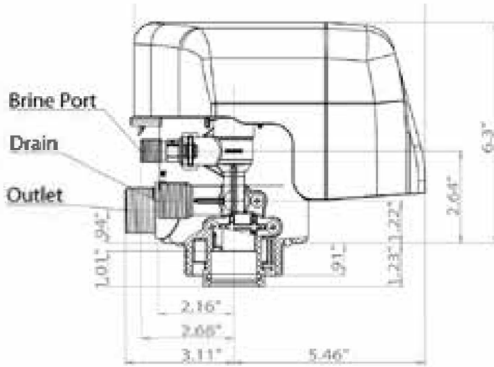
- Patented ceramic discs are corrosion and abrasion resistant for longer life and reduced maintenance.
- No wear parts to service or replace which means **no maintenance, disassembly or replacement parts needed!**
- 32mm (1-1/4") internals for high flow.
- Complete flexibility when programming grains capacity / salt dosage. Not constrained to limited, pre-programmed choices.
- Bright, easy to read LCD display.
- 72-hour memory backup for program functions.
- 8% crosslink resin.



\*Brine tank size and color may vary.



This valve is Tested and Certified by NSF International against NSF/ANSI Standard 44 for materials and structural integrity requirements.



## System Specifications

MODEL	CAPACITY GRAINS	RESIN CU. FT.	TANK D x H (in.)	BRINE TANK D x H (in.)	SERVICE FLOW RATE (GPM)			BACKWASH GPM
					MIN	NORMAL	PEAK	
DWC32CD	32,000	1	9" x 48"	18" x 33"	2	5	10	2
DWC48CD	48,000	1.5	10" x 54"	18" x 33"	3	7.5	15	2.9
DWC64CD	64,000	2	12" x 52"	18" x 40"	4	10	20	4.2
DWC80CD	80,000	2.5	13" x 54"	18" x 40"	5	12.5	25*	4.8
DWC96CD	96,000	3	14" x 65"	18" x 40"	6	15	25*	4.9

\*Peak Service Flow  
@ 25 psi Drop

## Electrical / Operational Specifications

Control Valve		Working Conditions	
Transformer Input	100-240VAC / 50-60Hz	Water Pressure	20-120 psi
Transformer Output	12DC / 2A	Water Temperature	35°F-125°F
Valve Wattage	24W	pH Level	7.5 ± 0.5

## Control Valve Parameters

Inlet / Outlet	Drain	Brine	Base	Riser Tube	Hard Water Bypass
3/4", 1" (DEFAULT), or 1-1/4"	3/4"	3/8"	2.5" - 8NPSM	32mm	Yes

## Additional Specifications

Tank Material	Valve Height From Top of Tank	Meter Accuracy	Clock
HDPE Liner w/ Fiberglass Wrap	7" / 180mm	±5%	12- or 24-hour