

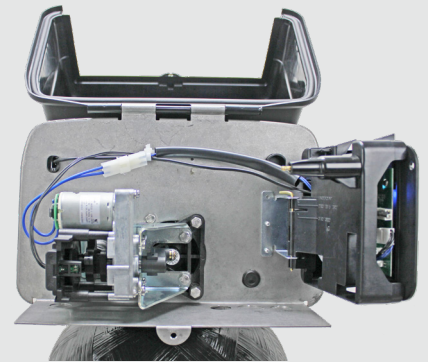
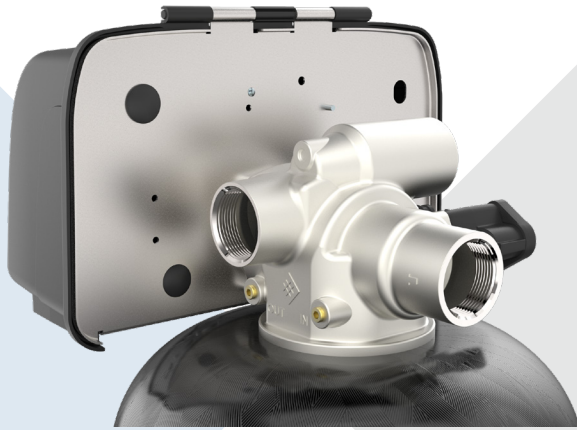
FLECK 2815

STAINLESS STEEL VALVE



2815 STAINLESS STEEL VALVE

BUILT TO LAST



DEPENDABLE

Stainless steel construction makes this valve more durable and reliable than brass construction

MEETS REGULATORY STANDARDS

Adheres to strict standards for a truly lead-free material

COMPATIBLE

Designed to perform on most commercial softener sizes

EASY SERVICE

Hinged cover allows quick access to install a one piece seal and spacer cartridge

IMPROVED PERFORMANCE

A 70 gpm backwash rate allows the 2815 to perform on softener tanks up to 36" diameter

est. 1947

DUFF CO.



201 E Lafayette St
Norristown, PA 19401



610-275-4453



duffco.com



info@duffco.com