

est. 1947

DUFF^{co.}

When you need it now... or don't know how

Meet the dishwasher that does it all!

No need to invest in multiple warewashers. The CADET can handle it all! Using dedicated cycles, the CADET can go from washing pots and pans to fine stemware with the press of a button. Comes fully equipped right out of the box.

Features:

- Meets and exceeds Energystar 3.0 rating
- Three dedicated washing cycles (Dishware, Cookware, and Glassware)
- Single phase (1PH) electrical connection, field-convertible to three phase (3PH) with included copper connectors
- 110°F recommended inlet water temperature; 70°F minimum required water temperature
- Dedicated timed de-lime cycle to eliminate limescale build-up
- Easy service - all components accessible from the front of machine
- Sound suppression lined panels (Rated at <65dB)

CADET

3-in-1 Undercounter Dishwasher



Three Cycles. Endless Options.



DISHWARE

- Normal Pressure
- Normal 2 Minute Cycle
- Normal Final Rinse



COOKWARE

- High Pressure
- Extended 5 Minute Cycle
- Elevated Final Rinse



GLASSWARE

- Low Pressure
- Normal 2 Minute Cycle
- Extended Final Rinse

CALL 610-275-4453

DUFFCO.COM

INFO@DUFFCO.COM



CADET Undercounter Dishwasher

- Three dedicated wash cycles (Dishware, Cookware, Glassware)
- Meets and exceeds EnergyStar 2.0 rating
- Extremely quiet with sound suppression lined panels. Rated at <65dB
- Built-in atmospheric booster with dedicated rinse pump provide consistent, constant 180°F hot water to properly sanitize ware—no external booster required
- 110°F recommended inlet water temperature; 70°F minimum required water temperature
- Perfect for Daycares, Nursing Homes, and Small Cafes

STANDARD FEATURES

- Capacity is 30 (20" x 20) racks per hour or 750 dishes per hour
- Only 0.8 gal (3L) of water per rack
- Full stainless steel construction inside and out for durability
- Tank has rounded corners for easy cleaning
- Electronic PCB control with temperature display, LED indicator lamps, and self-diagnostics for serviceability
- Single phase (1PH) electrical connection, field-convertible to three phase (3PH) with included copper jumper connectors
- Waterproof membrane control switches
- No need for PRV (Pressure Regulating Valve).
- Built-in detergent and rinse aid dispensers with EZ Prime system
- Automatic pumped drain with removable overflow tube
- Single step drain and clean system
- Dedicated timed de-lime cycle to eliminate limescale build-up
- Revolving interchangeable stainless steel upper and lower wash/rinse arms provide superior results
- Door opening is 13 3/16" for maximum clearance
- Easy to service—all components accessible from the front of machine
- Sound suppression lined panels
- Comes standard with: 1 Plate rack, 1 Cup rack, 1 Glass Rack, 2 Cutlery Cups

OPTIONS

- Additional plastic 20" x 20" rack
- Drain quench system
- 6" stand
- 17" stand
- Drip 'n Dry drying rack



est. 1947

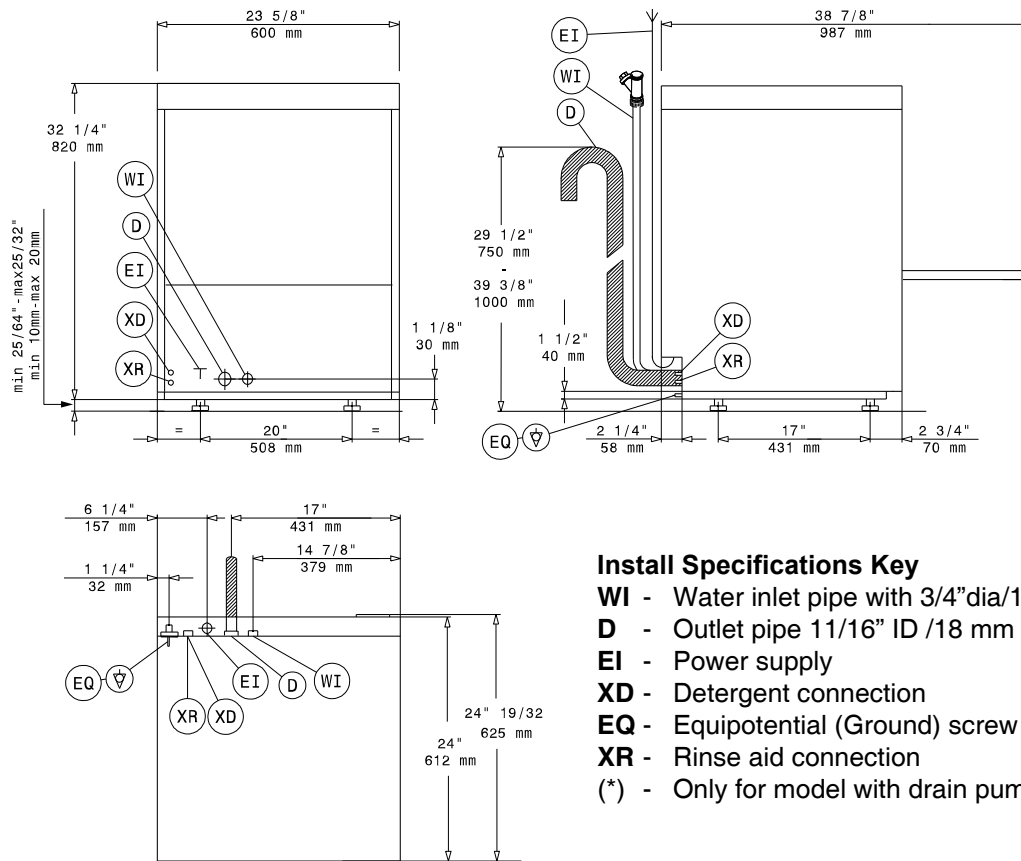
DUFF CO.

When you need it now... or don't know how

CALL 610-275-4453

DUFFCO.COM

INFO@DUFFCO.COM



Install Specifications Key

- WI** - Water inlet pipe with 3/4" dia/19mm fittings
- D** - Outlet pipe 11/16" ID /18 mm (*)
- EI** - Power supply
- XD** - Detergent connection
- EQ** - Equipotential (Ground) screw
- XR** - Rinse aid connection
- (*) - Only for model with drain pump

| | |
|--|--|
| Capacity Per Hour | 30 racks 750 dishes 68 meals |
| Tank Capacity | 6.08 gallons |
| Booster Capacity | 3 gallon built-in booster |
| Motor Size | 1hp (wash) |
| Electric Usage | 2.2 kW wash tank 6.0 kW built-in booster (40°-70° rise) 6.85 kW maximum operating |
| Water Inlet Temperature | 110°F recommended inlet water temperature; 70 °F minimum required water temperature |
| Final Rinse Consumption at 20 psi min. | 25.5 gallons/hour 0.80 gallons/rack |
| Exhaust Hood Requirement | None |
| Time Cycle | 120 sec. (Standard) 240 sec. (Extended) 130 sec. (Gentle) |
| Shipping Weight | 165 lbs. |
| Current Draw Amps | Electric with Built-in Booster |
| 208/1/60 | 33 |
| 208/3/60 | 20 |
| Recommended Plug and Receptacle | 1-Phase: L15-50P (Plug) L15-50R (Receptable) 3-Phase: L15-30P (Plug) L15-30R (Receptable) |

SPECIFICATIONS

CONSTRUCTION- Door, front, side, and top panels are of stainless steel AISI304 ("T304") construction of various material thicknesses including sound-suppression lined panels. Upper and lower wash/rinse arms are T304 stainless steel and are interchangeable and revolving. Tank is stainless steel with stamped rounded corners for easy cleaning.

CONTROLS- Electronic PCB waterproof membrane controls with temperature display, LED indicator lamps, and self-diagnostics for serviceability. Three (3) dedicated cycle buttons (regular, extended, gentle) also function to prime detergent and rinse aid.

WASH/RINSE SYSTEM- Three (3) dedicated wash cycles- Regular (dishware), Extended (cookware), Gentle (glassware). 110°F recommended inlet water temperature; 70°F minimum required water temperature. Built-in atmospheric booster with dedicated rinse pump for 180° final rinse.

DRAIN SYSTEM- Drain pump moves water up to 29 1/2" above floor level. Connection to be open drain with atmospheric air gap. Dishwasher drain system cannot be tied into garbage disposal.

INTERNAL HEIGHT- 13 3/16"

est. 1947

DUFF CO.

When you need it now... or don't know how