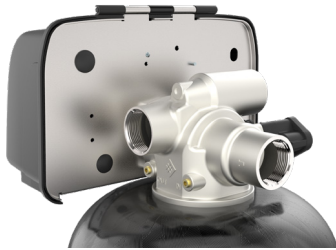


# 2815 COMMERCIAL VALVE

## 1-1/2 INCH STAINLESS STEEL CONTROL VALVE



**DUFF WATER CONDITIONING**  
Products for Quality Water



### FEATURES • BENEFITS

- ◆ 316 grade stainless steel valve body for superior strength and durability
- ◆ Continuous service flow and backwash rates of 70 GPM
- ◆ Backwash capability accommodates softener tanks up to 36" in diameter and filter tanks up to 30" in diameter
- ◆ Fully adjustable 3- or 5-cycle control for efficient and reliable water treatment system operation
- ◆ Designed for single or multiple tank systems
- ◆ Corrosion resistant, UV stabilized NEMA 3R rated cover provides protection against water intrusion
- ◆ Hydraulically-balanced composite piston for durable sealing and performance
- ◆ One-piece seal and spacer cartridge simplifies service



TESTED and CERTIFIED by the WQA to NSF/ANSI Standard 61 Section 8 Material Safety Only.



TESTED and CERTIFIED by the WQA to NSF/ANSI Standard 372 for Lead Free Compliance.



UL recognized to 979

### CONFIGURATIONS • OPTIONS

- ◆ NPT Stainless Steel
- ◆ 100-240 VAC operating range with multiple power plug choices (some models)
- ◆ No hard water bypass piston
- ◆ Brine cam auxiliary switch
- ◆ Electromechanical timer auxiliary switch
- ◆ Optional blue or silver bezels sold separately
- ◆ **XTR2** - Premium controller with large color LCD touch screen display offers intuitive navigation and a full complement of advanced features for system type 4 softeners and filters
- ◆ **SXT** - Large LCD display and user-selectable time clock or metered
- ◆ **Electromechanical Timer**- Simple to adjust and easy to service with quick access to all internal components
- ◆ **3200 Electromechanical Timer**- 7-day or 12-day time clock operation
- ◆ **3210 Electromechanical Timer**- Meter delayed operation

## VALVE SPECIFICATIONS

Valve Material	Stainless Steel - 316 Grade
Inlet/Outlet	1-1/2" NP
Cycles	3 or 5

## FLOW RATES (50 PSI INLET) - VALVE ALONE

Continuous 15 psi (1.0 bar) drop	70 GPM (265.0 LPM)
Peak 25 psi (1.7 bar) drop	90 GPM (340.7 LPM)
Cv flow at 1 psi (0.07 bar) drop	18 GPM (68.1 LPM)
Max. Backwash 25 psi (1.7 bar) drop	70 GPM (265.0 LPM)

## REGENERATION

Downflow/Upflow	Downflow only
Adjustable Cycles	Yes
Timer Available	
XTR2:	0 - 240 min/cycle
SXT:	0 - 99 min/cycle
Electromechanical:	0 - 164 min/regeneration

## METER INFORMATION

Meter Accuracy	
1" Paddle:	0.7 - 40 GPM ± 5% (2.6 - 151.4 LPM)
1-1/2" Paddle:	1.5 - 75 GPM ± 5% (5.7 - 283.9 LPM)
Meter Capacity Range	
XTR2:	1 - 9,999,999 gal (0-99,999 m <sup>3</sup> )
SXT:	1 - 999,900 gal (0 - 3,785 m <sup>3</sup> )
1" EM Standard:	310 - 5,270 gal (1.2 - 20 m <sup>3</sup> )
1" EM Extended:	1,550 - 26,350 gal (6 - 100 m <sup>3</sup> )

## METER INFORMATION (continued)

1-1/2" EM Standard:	625 - 10,625 gal (2.5 - 40 m <sup>3</sup> )
1-1/2" EM Extended:	3,125 - 53,125 gal (12 - 200 m <sup>3</sup> )

EM = Electromechanical

## DIMENSIONS

Distributor Pilot/ Riser Tube Diameter	1.9" OD Tube (48.3 mm)
Drain Connection	1-1/2" NPT
Brine Valve	1/2" OD Tube (13 mm)
Injector System	1720
Mounting Base	4" - 8 UN
Height from Top of Tank	9" (229 mm)
Riser Height	0.25" (6.3 mm) below flush ± 0.25" (6.3 mm)

## TYPICAL APPLICATIONS

Water Softener	14 - 36" (356-914 mm) diameter
Filters	14 - 30" (356-762 mm) diameter based on 10 GPM/ft <sup>2</sup>

## ADDITIONAL INFORMATION

Electrical Rating	24/100-240V 50/60 Hz 40VA max.
Estimated Shipping Weight	22 lbs. (10 kg.)
Pressure	
Hydrostatic:	300 psi (20 bar)
Working:	20 - 125 psi (1.4 - 8.5 bar)
Water Temperature	34 - 150°F (1 - 66°C)

<sup>§</sup>For a detailed list of where Pentair trademarks are registered, please visit [waterpurification.pentair.com/brands](http://waterpurification.pentair.com/brands). Pentair trademarks and logos are owned by Pentair plc or its affiliates. Third party registered and unregistered trademarks and logos are the property of their respective owners.

© 2018 Pentair Residential Filtration, LLC. All rights reserved.  
4004630 Rev A JLI18